

ELENA M. KAMEL, M.D.

ANITA LEVIN, M.D.

LINDA S. KATZ, M.D.

PAMELA A. LUI, M.D.

JULIE A. ERICSON, M.D.

JULIE M. LEVITT, M.D.

KAMALJEET MURTHY, M.D.



The Women's Group of Northwestern

OBSTETRICS AND GYNECOLOGY

WWW.WOMENOBGYN.NET

JORDAN L. SHERAN, M.D.

STEPHANIE W. LAU, M.D.

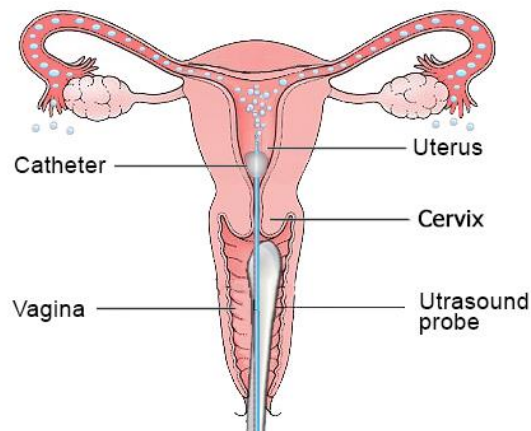
ADRIENNE J. ADAMS, M.D.

BARBARA HARTNETT, RNC, MS

ASHLEY GIER, MSN, WHNP

LAURA B. FRESE, MMS, PA-C

FemVue Sono HSG



FemVue, also known as a sono-hysterosalpingogram, is done under ultrasound in the office to evaluate the uterine cavity and Fallopian tubes for women undergoing a fertility evaluation and is being done in place of the HSG for some patients. Unlike the HSG, FemVue does not require X-ray and is done in the office, eliminating a trip to the hospital. The procedure is performed during the first half of your menstrual cycle, after menses has ended but before ovulation, usually between cycle days 6 and 11.

What to Expect: First we do a traditional vaginal ultrasound to measure the uterus, look at the muscles of the uterus, measure the ovaries and make sure the ovaries appear normal. Then a speculum is placed in the vagina, the cervix is cleaned and a thin plastic catheter is placed through the cervix into the uterus. Then while watching with ultrasound, a small amount of saline is injected into the uterine cavity so we can see the uterine anatomy and see if there's anything inside of the uterus that could prevent the pregnancy from occurring. We can also instill some bubbles into the uterine cavity and see if the bubbles pass through the Fallopian tubes so we can evaluate if the Fallopian tubes are open.

Preprocedure: (before) The procedure takes approximately 15-20 minutes. We recommend ibuprofen or Aleve 30 minutes prior to procedure with some food.

Postprocedure: (after) You may experience menstrual like cramps, spotting and drainage of saline after the procedure.