

ELENA M. KAMEL, M.D.

ANITA LEVIN, M.D.

LINDA S. KATZ, M.D.

PAMELA A. LUI, M.D.

JULIE A. ERICSON, M.D.

JULIE M. LEVITT, M.D.

KAMALJEET MURTHY, M.D.



The Women's Group of Northwestern

OBSTETRICS AND GYNECOLOGY

WWW.WOMENOBGYN.NET

JORDAN L. SHERAN, M.D.

STEPHANIE W. LAU, M.D.

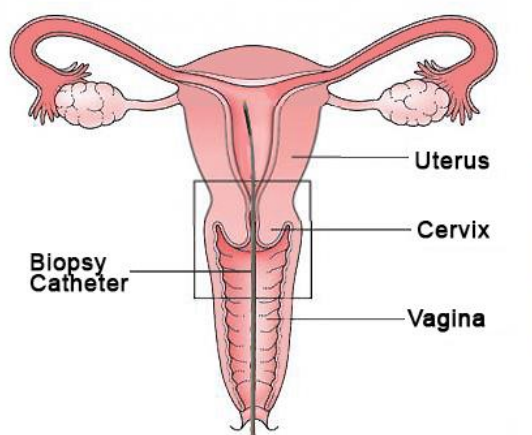
ADRIENNE J. ADAMS, M.D.

BARBARA HARTNETT, RNC, MS

ASHLEY GIER, MSN, WHNP

LAURA B. FRESE, MMS, PA-C

Endometrial Biopsy



The **endometrial biopsy** is an office procedure that is used to remove a sample of the [lining of the uterus](#). The tissue subsequently undergoes a [histological evaluation](#) at the Northwestern Memorial Hospital pathology department which is supplied to the physician to aid in the diagnosis. Endometrial biopsy is usually done to investigate abnormal uterine bleeding. Your physician will take tissue samples from the inside of the uterus using a thin hollow catheter. The procedure can cause cramping for about five minutes and subsides quickly.

What To Expect: A speculum will be placed in the vagina as with a Pap smear. The cervix will be cleansed with an antiseptic solution before the device is inserted. We pass a thin catheter that goes through the cervix into the uterus to get a sample of tissue. It may cause discomfort for about one minute.

Preprocedure: (before) Eat your regular meals. You may take a pain medicine 30-60 minutes prior to the procedure. This could include over-the-counter Aleve, Advil, or Motrin.

Postprocedure: (after) You may have mild cramping. Expect vaginal discharge. We will advise you not to put anything in the vagina or exercise for several days. Biopsy results are usually available 7-10 days after the procedure.